

DECEMBER/JANUARY 2017

# House Beautiful

## HOLIDAY

# Magic!







**PAINT**

## Take a Chance

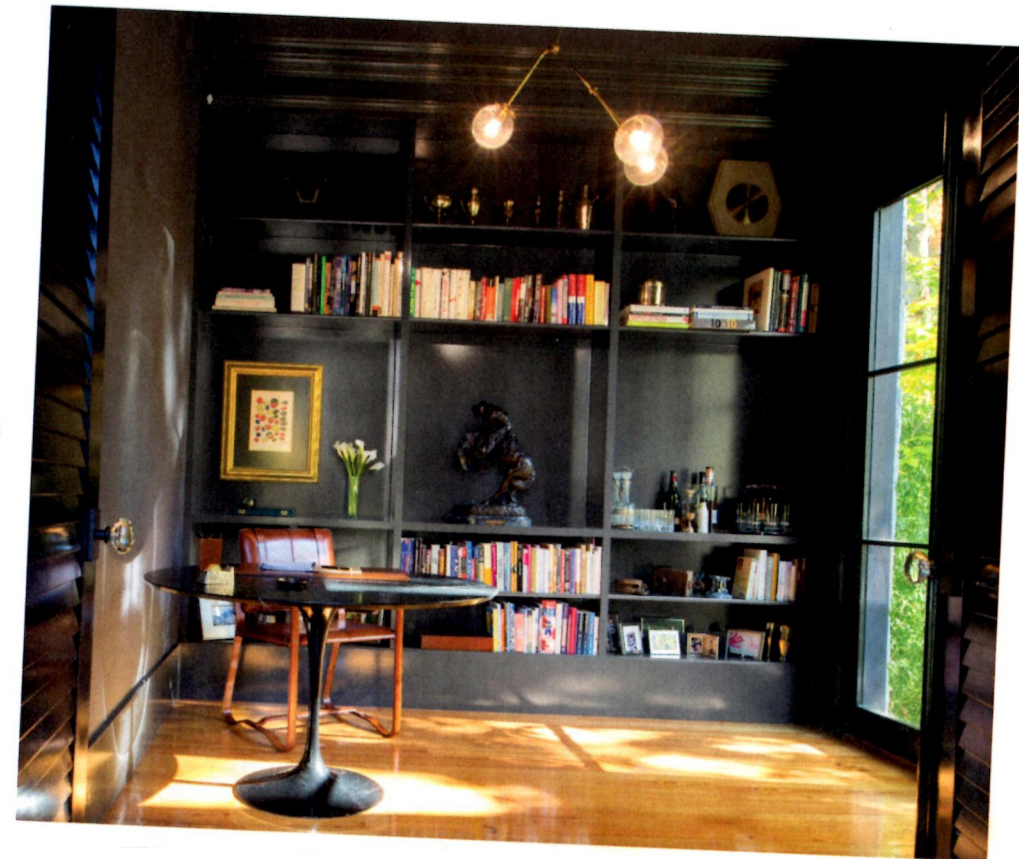
*Not all hues are true to the swatch. Here are a dozen that outperform their first impressions.*



**DUSK**  
RESTORATION HARDWARE  
"Although this blue is about as scary as a Smurf, it frightened my clients. They felt it was too strong and intimidating for the mudroom of their Florida beach home. Fully committing to the color for the cabinets and the walls was the trick to changing their minds. The rest of the house is neutral, and this is an escape, like swimming in cool water. It's now their favorite room!"  
**MELANIE TURNER**



**BLACK CHIFFON N-C15**  
CLARK+KENSINGTON  
"This gray-black reminds me of shadows—for me, that's a good thing!—and I envisioned it on the walls, bookcases, and ceiling of my husband's study. But what I thought of as cozy, he worried would be oppressive. Ultimately, he loved it. With the gold overhead light and leather chair, it's tailored and masculine, not cave-like."  
**CARMEL GREER**



Benjamin Moore's 2017 Color of the Year!



**BERMUDA PINK 016**  
BENJAMIN MOORE  
"Like all the pinks I'm drawn to, this has some spice with the sugar. Those orangish undertones make the swatch look different—a little bit peach. It's not until you scale up the color to room size that you realize its genius. Since it's more nuanced than sweeter, frostier pinks, you can combine it with shades that usually clash—oranges, reds—and pull off a room with amazing vibrancy."  
**ALLISON TICK**

**ORANGE DAYLILY DE5145**  
DUNN-EDWARDS  
"Orange has a difficult reputation for a reason. To start with, you have to get the proper tone. This color has it, and in a room it reads as luxurious—it's reminiscent of an Hermès box. But then the lighting also has to be right; it needs to be warm, not blue. LED bulbs or incandescents are a must. Get the lighting correct, and this color will envelop you in warmth."  
**KELLY WEARSTLER**

**VAN COURTLAND BLUE HC-145**  
BENJAMIN MOORE  
"At first glance, this blue is powdery and soft, almost like a pastel. Then you see it in situ, and you immediately understand its moody depths and complexity. You're struck by the richness, the mystery, and the timelessness. Because it both calms and intrigues, it's perfect for a bedroom. I love the way it interacts with wood tones, warmer neutrals, and antiques."  
**CALEB ANDERSON**

**NAVAL SW 6244**  
SHERWIN-WILLIAMS  
"After I confidently suggested this intense blue for a client's study, I started second-guessing myself. What designer hasn't chosen a saturated blue only to find that it's more downbeat than moody? Thankfully, this sprang to life as it was applied to the walls—it's lively and oh so chic! I realized it's the exact blue of the gorgeous tiles I saw at the mosques all over Turkey."  
**RYAN SAGHIAN**

**SHADOW 2117-30**  
BENJAMIN MOORE  
"When people seek out dark colors they often pick blacks or grays, but there's a versatility to deep purple that I think would surprise them. To me it's a neutral, and its ability to create a layered, intimate room is almost magical. You can bring out its luxe side with gold tones, be bold and partner it with orange, or soften it with creams. Trust me: Try it in a dining room, and you'll be enamored."  
**ELENA FRAMPTON**

PHOTOGRAPHERS INTERIOR, THIS PAGE: EMILY FOLLOWILL; INTERIOR, OPPOSITE PAGE: JOHN COLE. FOR MORE DETAILS, SEE RESOURCES



**INCHYRA BLUE 289**  
FARROW & BALL  
"Skip over this daring blue, and you'll miss one of the happiest, sunniest colors going. It's more playful than it lets on, and I find it works wonders in light-challenged rooms. I didn't realize its mood-boosting powers until I did a ground-floor dining room in Brooklyn with khaki walls. Adding this to the built-in cabinets made the space as uplifting and cheerful as a summer day."  
**SUZANNE McGRATH**

**DEBONAIR SW 9139**  
SHERWIN-WILLIAMS  
"I hesitated with this hue. It's historical and classic, a bit sentimental, and evocative of Wedgwood porcelain. So far, so good! Still, I worried it could skew somber. My plan was to use it in a music room, and while it was being painted, I anxiously held my breath: Would it drag down the energy in the space? Turns out, it's soulful. It simultaneously grounded and elevated the room."  
**LATHEM GORDON**

**OLIVE 13**  
FARROW & BALL  
"Often the initial reaction to this olive green is that it's dark, maybe even a little dingy. It doesn't seem like it would get you rah-rah excited or inspired. But don't underestimate it! It has a sophistication that's ideal for millwork and trim, which I took advantage of in a library. Paired with textured wallpaper in a paler green, it instantly softened the room without sacrificing any of its character."  
**GIDEON MENDELSON**

**MIDDLESTONE 12-22**  
PRATT & LAMBERT  
"I gravitate toward colors that are hard to classify, like this one. It's somewhere between a Creole mustard gold and the infamous green associated with—ahem—bodily functions. Obviously a tough sell. But in my family room, it picks up the botanical hues outside to create a sultry, modern take on a garden room. That chameleon quality is the secret to its success."  
**MELISSA RUFTY**

**HAZELWOOD 1005**  
BENJAMIN MOORE  
"It seems like a noncolor, but would you believe this taupe is one of the richest, most romantic, most flattering hues around? You'll be astonished every time you see it. As the light changes throughout the day it transforms, and its mauve tones become more pronounced. For a client's apartment, it was stunning teamed with luxe leathers, shagreens, and accents of silver and bronze."  
**KEVIN DUMAIS**